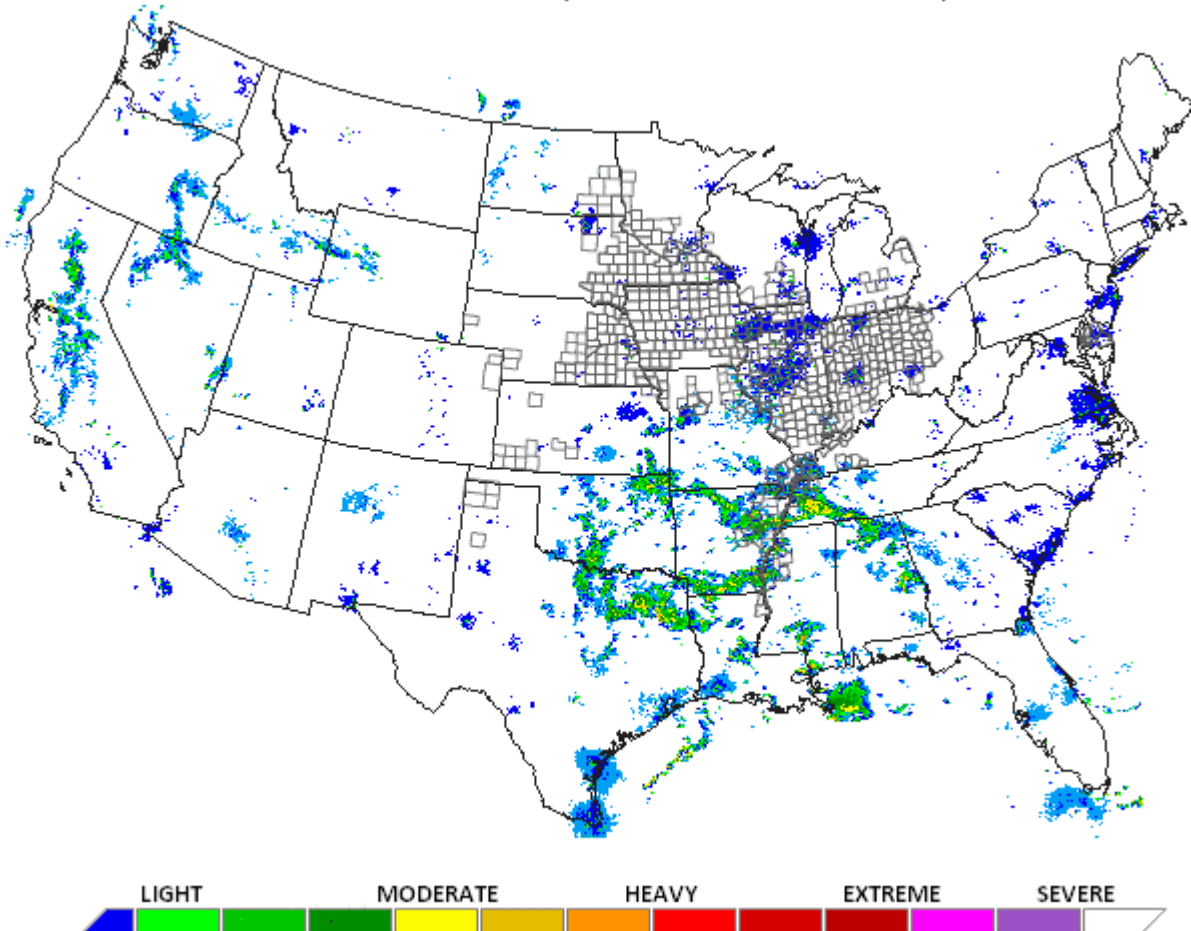


Issued: September 14, 2009 Vol. 3, No. 33

Current Radar (07:42 EDT 14 SEP 2009)

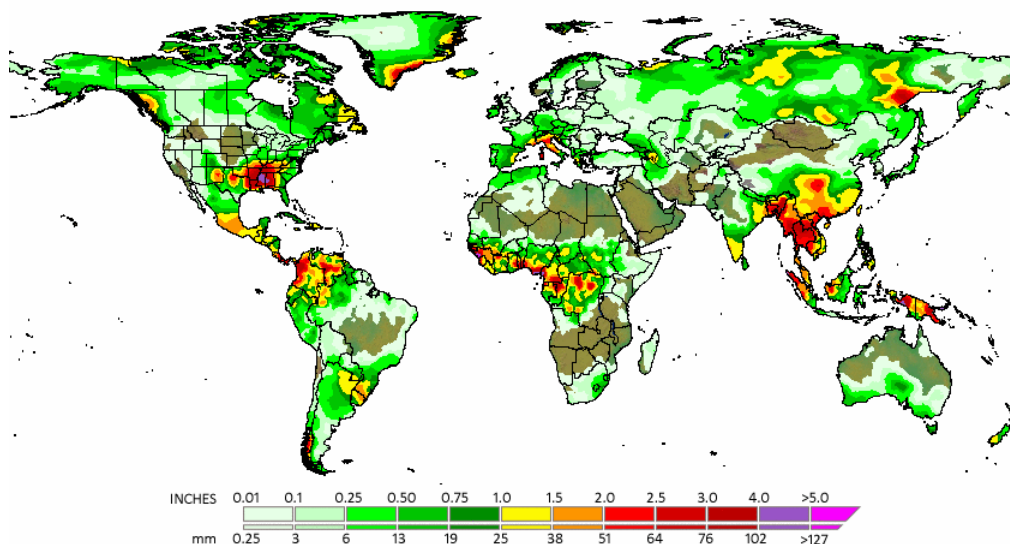


*The risk of loss in trading futures and options can be substantial, therefore only genuine "risk" funds should be used in such trading. Futures and options may not be a suitable investment for all individuals and individuals should carefully consider their financial condition in deciding whether to trade. Option traders should be aware that the exercise of a long option will result in a futures position. Information herein has been obtained and prepared from sources believed to be reliable; however no guarantee to its accuracy is made. Comments contained in these materials are not intended to be a solicitation to buy or sell any of the commodities mentioned. Past performance is not indicative of future performance results. Opinions expressed herein are the options of the author only and not the opinion of any firm the author may be affiliated or associated with.

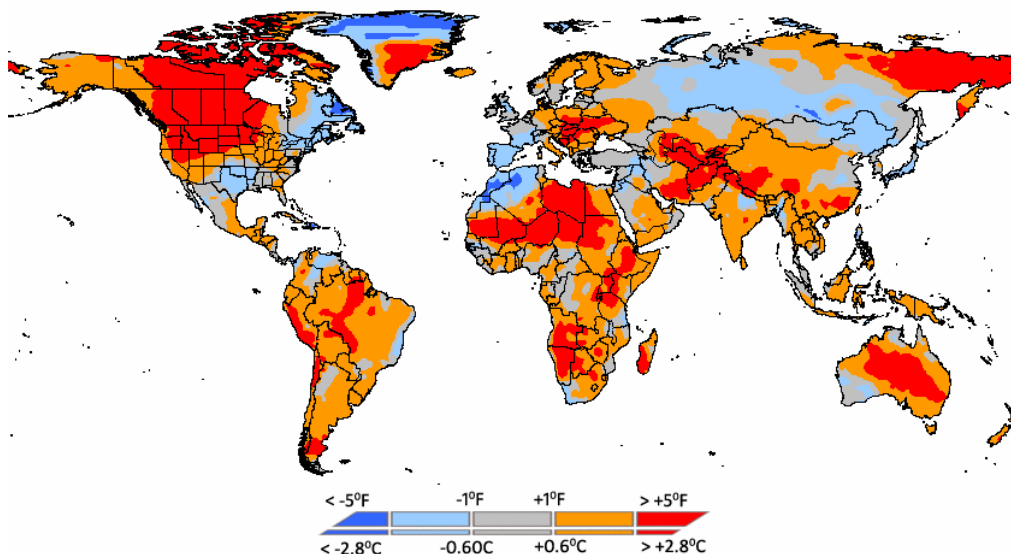
COMMENTS

Warmer temperatures and a dry pattern are expected this week for the US northern corn belt, before conditions look to turn cool again for next week. USDA issued their crop expectations on Friday and are calling for a corn crop of 12.955 billion bushels, with average yields in major growing states of 161.9 bu/acre. This estimate is higher than the **WTI yield expectation of 156.0 – 158.5 bu/acre**. A favorable August weather pattern is helping the corn crop, but we still feel that their expectations are too optimistic; the cooler start combined with conditions that are conducive to late season disease pressure will still have the ability to limit yield, and we think that the final number will come in lower than last week's report indicated. For soybeans, the USDA is anticipating a crop size of 3.245 billion bushels, with an average yield of 42.3 bu/acre. The USDA bean yield estimate is right in line with the **WTI expectation**, which is for a yield range of **41.5 – 43.5 bu/acre**, unchanged from last week. Both USDA estimates are built upon the assumption of favorable weather conditions through harvest; our outlook has been for a sub-optimal late Sep through Oct, so a pattern that limits yields is built into our crop expectations. The USDA numbers for corn and beans are the highest we have seen; other private groups issuing crop expectations are also remaining cautious, and figuring that weather will be a limiting factor in late season development.

Weekly Rainfall (13 SEP 2009 - 19 SEP 2009)



Weekly Avg Temperature vs Normal (13 SEP 2009 - 19 SEP 2009)



US CORN AND SOY BELT

LAST WEEK (Sep 6, 2009 – Sep 12, 2009) Weather Summary

Region	City	State	Weekending	Normal	Normal	LAST YEAR	LAST YEAR	THIS YEAR	THIS YEAR	T Change	P Change	T Change	P Change
			Date (Saturday)	Mean Temp	Precip	Mean Temp	Precip	Mean Temp	Precip	TY - LY	TY - LY	TY-N	TY-N
Corn	Akron	OH	09/12/2009	65.1	0.84	64.5	2.98	66.4	0.10	1.9	-2.88	1.3	-0.74
	Amarillo	TX	09/12/2009	71.0	0.48	66.8	0.84	71.1	0.01	4.3	-0.83	0.1	-0.47
	Bismarck	ND	09/12/2009	60.2	0.41	56.8	0.23	66.8	1.19	10.0	0.96	6.6	0.78
	Bowling Green	KY	09/12/2009	71.9	0.98	75.4	0.00	73.3	0.75	-2.1	0.75	1.4	-0.23
	Columbia	MO	09/12/2009	69.5	0.84	67.6	4.80	71.6	0.00	3.9	-4.80	2.1	-0.84
	Columbus	OH	09/12/2009	68.8	0.72	69.4	0.84	70.1	0.39	0.8	-0.45	1.4	-0.33
	Dodge City	KS	09/12/2009	71.5	0.42	66.4	0.34	70.9	2.46	4.4	2.12	-0.6	2.04
	Dubuque	IA	09/12/2009	64.0	0.90	61.3	2.42	66.6	0.00	5.3	-2.42	2.6	-0.90
	Evansville	IN	09/12/2009	71.4	0.73	73.6	0.38	72.7	1.65	-0.9	1.27	1.3	0.92
	Flint	MI	09/12/2009	62.9	0.92	62.3	3.17	66.0	0.00	3.7	-3.17	3.1	-0.92
	Fort Wayne	IN	09/12/2009	66.3	0.70	66.4	1.32	67.9	0.66	1.4	-0.66	1.6	-0.04
	Grand Rapids	MI	09/12/2009	63.6	1.05	64.3	3.31	67.9	0.04	3.6	-3.27	4.2	-1.01
	Harrisburg	PA	09/12/2009	68.6	0.88	69.7	0.39	65.9	2.28	-3.9	1.89	-2.7	1.40
	Huron	SD	09/12/2009	63.6	0.42	59.4	0.11	68.8	1.51	9.4	1.40	5.2	1.09
	Indianapolis	IN	09/12/2009	68.6	0.70	69.8	1.36	70.6	0.17	0.8	-1.19	2.0	-0.53
	Jackson	TN	09/12/2009	74.2	0.89	77.8	0.00	75.9	0.52	-1.9	0.52	1.7	-0.37
	Lafayette	IN	09/12/2009	68.7	0.68	68.1	0.78	70.6	0.06	2.5	-0.72	1.9	-0.62
	La Junta	CO	09/12/2009	69.6	0.21	66.1	0.04	70.0	0.00	3.9	-0.04	0.4	-0.21
	Lincoln	NE	09/12/2009	68.4	0.71	64.2	2.05	70.0	0.25	5.8	-1.80	1.6	-0.46
	Madison	WI	09/12/2009	62.9	0.79	61.1	1.26	65.9	0.00	4.7	-1.26	3.0	-0.79
	Milwaukee	WI	09/12/2009	65.1	0.83	64.5	1.24	67.6	0.00	3.1	-1.24	2.5	-0.83
	Ottumwa	IA	09/12/2009	67.9	0.98	62.6	2.94	67.3	0.00	4.6	-2.94	-0.6	-0.98
	Peoria	IL	09/12/2009	67.6	0.76	65.6	6.79	69.6	0.70	3.9	-6.09	2.0	-0.06
	Raleigh	NC	09/12/2009	73.3	1.02	77.0	1.19	71.5	0.57	-5.5	-0.62	-1.8	-0.45
	Rochester	MN	09/12/2009	61.1	0.79	59.3	0.28	65.5	0.00	6.2	-0.28	4.4	-0.79
	St. Cloud	MN	09/12/2009	59.6	0.74	56.3	2.23	68.3	0.01	12.0	-2.22	8.6	-0.73
St. Louis	MO	09/12/2009	72.5	0.70	72.0	1.80	73.4	0.01	1.4	-1.79	0.9	-0.69	
Sioux City	IA	09/12/2009	65.3	0.57	62.5	1.19	68.6	1.04	6.1	-0.15	3.3	0.47	
Springfield	IL	09/12/2009	69.1	0.70	65.9	2.80	70.4	0.23	4.5	-2.57	1.2	-0.47	
Topeka	KS	09/12/2009	70.3	0.91	66.6	5.19	70.6	0.36	4.0	-4.83	0.3	-0.55	
CORN BELT SUMMARY				67.4	22.27	66.1	52.27	69.4	14.96	3.3	-37.31	2.0	-7.31

Region	City	State	Weekending	Normal	Normal	LAST YEAR	LAST YEAR	THIS YEAR	THIS YEAR	T Change	P Change	T Change	P Change
			Date (Saturday)	Mean Temp	Precip	Mean Temp	Precip	Mean Temp	Precip	TY - LY	TY - LY	TY-N	TY-N
Soybeans	Akron	OH	09/12/2009	65.1	0.84	64.5	2.98	66.4	0.10	1.9	-2.88	1.3	-0.74
	Alexandria	LA	09/12/2009	78.2	0.71	81.1	0.27	81.6	4.29	0.5	4.02	3.4	3.58
	Bismarck	ND	09/12/2009	60.2	0.41	56.8	0.23	66.8	1.19	10.0	0.96	6.6	0.78
	Bowling Green	KY	09/12/2009	71.9	0.98	75.4	0.00	73.3	0.75	-2.1	0.75	1.4	-0.23
	Columbia	MO	09/12/2009	69.5	0.84	67.6	4.80	71.6	0.00	3.9	-4.80	2.1	-0.84
	Columbus	OH	09/12/2009	68.8	0.72	69.4	0.84	70.1	0.39	0.8	-0.45	1.4	-0.33
	Dubuque	IA	09/12/2009	64.0	0.90	61.3	2.42	66.6	0.00	5.3	-2.42	2.6	-0.90
	Evansville	IN	09/12/2009	71.4	0.73	73.6	0.38	72.7	1.65	-0.9	1.27	1.3	0.92
	Flint	MI	09/12/2009	62.9	0.92	62.3	3.17	66.0	0.00	3.7	-3.17	3.1	-0.92
	Fort Wayne	IN	09/12/2009	66.3	0.70	66.4	1.32	67.9	0.66	1.4	-0.66	1.6	-0.04
	Grand Island	NE	09/12/2009	66.7	0.63	63.1	0.85	68.7	0.43	5.6	-0.42	2.0	-0.20
	Grand Rapids	MI	09/12/2009	63.6	1.05	64.3	3.31	67.9	0.04	3.6	-3.27	4.2	-1.01
	Greensboro	NC	09/12/2009	72.0	1.02	74.5	0.66	71.9	0.00	-2.6	-0.66	-0.1	-1.02
	Huron	SD	09/12/2009	63.6	0.42	59.4	0.11	68.8	1.51	9.4	1.40	5.2	1.09
	Indianapolis	IN	09/12/2009	68.6	0.70	69.8	1.36	70.6	0.17	0.8	-1.19	2.0	-0.53
	Jackson	TN	09/12/2009	74.2	0.89	77.8	0.00	75.9	0.52	-1.9	0.52	1.7	-0.37
	Lafayette	IN	09/12/2009	68.7	0.68	68.1	0.78	70.6	0.06	2.5	-0.72	1.9	-0.62
	Little Rock	AR	09/12/2009	76.5	0.84	77.5	0.95	78.5	0.71	1.0	-0.24	2.0	-0.13
	Madison	WI	09/12/2009	62.9	0.79	61.1	1.26	65.9	0.00	4.7	-1.26	3.0	-0.79
	Milwaukee	WI	09/12/2009	65.1	0.83	64.5	1.24	67.6	0.00	3.1	-1.24	2.5	-0.83
	Ottumwa	IA	09/12/2009	67.9	0.98	62.6	2.94	67.3	0.00	4.6	-2.94	-0.6	-0.98
	Paducah	KY	09/12/2009	71.4	0.84	75.8	0.31	73.6	0.23	-2.1	-0.08	2.3	-0.61
	Peoria	IL	09/12/2009	67.6	0.76	65.6	6.79	69.6	0.70	3.9	-6.09	2.0	-0.06
	Rochester	MN	09/12/2009	61.1	0.79	59.3	0.28	65.5	0.00	6.2	-0.28	4.4	-0.79
	St. Cloud	MN	09/12/2009	59.6	0.74	56.3	2.23	68.3	0.01	12.0	-2.22	8.6	-0.73
	Sioux City	IA	09/12/2009	65.3	0.57	62.5	1.19	68.6	1.04	6.1	-0.15	3.3	0.47
Springfield	IL	09/12/2009	69.1	0.70	65.9	2.80	70.4	0.23	4.5	-2.57	1.2	-0.47	
Springfield	MO	09/12/2009	71.5	1.16	71.9	1.53	71.9	1.99	0.0	0.46	0.4	0.83	
Topeka	KS	09/12/2009	70.3	0.91	66.6	5.19	70.6	0.36	4.0	-4.83	0.3	-0.55	
Tupelo	MS	09/12/2009	75.4	0.77	78.4	0.39	77.7	1.18	-0.6	0.79	2.3	0.41	
SOYBEAN BELT SUMMARY				68.0	23.82	67.4	50.58	70.4	18.21	3.0	-32.37	2.4	-5.61

Much Colder < -7°	Colder -2° to -6°	Similar -1° to +1°	Warmer +2° to +6°	Much Warmer > +7°
Much Wetter >200%	Wetter 125% to 200%	Similar 75% to 125%	Drier 50% to 75%	Much Drier < 50%



US CORN AND SOY BELT

TWO WEEK FORECAST (Sep 13 – Sept 26, 2009)

Region	City	State	Weekending Sep 19, 2009										Weekending Sep 26, 2009									
			Normal	Normal	LAST YEAR	LAST YEAR	THIS YEAR	THIS YEAR	T Change	P Change	T Change	P Change	Normal	Normal	LAST YEAR	LAST YEAR	THIS YEAR	THIS YEAR	T Change	P Change	T Change	P Change
			Mean Temp	Precip	Mean Temp	Precip	Mean Temp	Precip	TY - LY	TY - LY	TY - N	TY - N	Mean Temp	Precip	Mean Temp	Precip	Mean Temp	Precip	TY - LY	TY - LY	TY - N	TY - N
Corn	Akron	OH	63.1	0.83	64.1	0.01	66.0	0.76	1.9	0.75	2.9	-0.07	60.5	0.8	64.6	0.0	59.8	0.8	-4.8	0.8	-0.7	0.02
	Amarillo	TX	69.0	0.42	64.6	0.00	67.1	0.01	2.4	0.01	-1.9	-0.41	66.9	0.4	69.3	0.0	68.3	0.1	-1.0	0.1	1.4	-0.32
	Bismarck	ND	57.3	0.35	64.1	0.00	68.9	0.00	4.8	0	11.6	-0.35	54.6	0.4	61.2	0.6	55.0	0.0	-6.2	-0.6	0.4	-0.35
	Bowling Green	KY	69.6	1.03	69.6	0.01	71.6	2.83	2.0	2.82	2.0	1.80	67.2	1.0	71.0	0.0	63.7	0.1	-7.3	0.1	-3.5	-0.87
	Columbia	MO	67.1	0.78	63.6	2.00	67.1	1.46	3.5	-0.54	0.0	0.68	64.8	0.8	69.9	0.2	59.7	0.6	-10.2	0.4	-5.1	-0.17
	Columbus	OH	66.6	0.70	68.1	0.02	69.0	0.93	0.9	0.91	2.4	0.23	64.1	0.6	68.8	0.0	61.8	0.8	-6.9	0.8	-2.3	0.15
	Dodge City	KS	69.1	0.38	66.2	0.00	68.1	0.00	1.9	0	-0.9	-0.38	66.7	0.4	74.1	0.0	66.8	0.0	-7.3	0.0	0.1	-0.35
	Dubuque	IA	61.7	0.83	62.4	0.13	64.8	0.85	2.4	0.72	3.1	0.02	59.4	0.7	66.9	0.1	53.9	1.3	-12.9	1.3	-5.4	0.60
	Evansville	IN	69.1	0.70	68.6	0.01	70.7	4.54	2.1	4.53	1.6	3.84	66.6	0.7	71.1	0.0	62.4	0.4	-8.6	0.4	-4.2	-0.31
	Flint	MI	60.6	0.91	60.1	2.63	65.5	0.41	5.4	-2.22	4.9	-0.50	58.1	0.9	62.3	0.0	56.8	0.7	-5.5	0.7	-1.4	-0.11
	Fort Wayne	IN	64.2	0.63	65.0	0.40	66.4	0.46	1.4	0.06	2.2	-0.17	61.7	0.6	67.1	0.0	58.7	0.5	-8.4	0.5	-3.0	-0.15
	Grand Rapids	MI	61.4	1.05	62.5	2.06	65.8	0.29	3.3	-1.77	4.4	-0.76	58.8	1.0	66.4	0.0	56.7	0.6	-9.6	0.6	-2.0	-0.36
	Harrisburg	PA	66.3	0.88	65.3	0.00	68.2	0.99	2.9	0.99	1.9	0.11	63.6	0.8	63.1	0.0	62.1	1.3	-1.1	1.3	-1.6	0.46
	Huron	SD	60.8	0.42	64.3	0.00	68.1	0.13	3.9	0.13	7.4	-0.29	58.0	0.4	66.3	0.3	56.1	0.2	-10.2	-0.2	-1.9	-0.26
	Indianapolis	IN	66.4	0.66	67.2	0.22	69.1	1.40	1.9	1.18	2.8	0.74	63.9	0.6	71.0	0.0	61.2	0.5	-9.8	0.5	-2.7	-0.14
	Jackson	TN	72.1	0.91	68.6	0.33	71.4	2.97	2.8	2.64	-0.8	2.06	69.9	0.9	70.5	0.1	64.7	0.0	-8.8	-0.1	-5.1	-0.91
	Lafayette	IN	66.5	0.63	66.1	0.98	68.2	0.94	2.1	-0.04	1.7	0.31	64.1	0.6	69.5	0.0	59.9	0.6	-9.6	0.6	-4.2	0.02
	La Junta	CO	67.1	0.20	64.9	0.06	69.1	0.00	4.2	-0.06	2.1	-0.20	64.6	0.1	71.1	0.2	67.7	0.0	-3.4	-0.2	3.2	-0.14
	Lincoln	NE	65.9	0.70	63.9	0.00	67.1	0.00	3.2	0	1.2	-0.70	63.2	0.6	70.8	0.1	60.6	0.0	-10.2	-0.1	-2.6	-0.63
	Madison	WI	60.5	0.71	62.3	0.09	64.4	0.93	2.1	0.84	3.9	0.22	58.1	0.6	66.9	0.1	54.8	1.0	-12.0	1.0	-3.3	0.40
	Milwaukee	WI	63.0	0.77	63.8	0.79	65.3	0.77	1.5	-0.02	2.3	0.00	60.6	0.7	67.1	0.0	58.2	1.0	-8.9	1.0	-2.4	0.32
	Ottumwa	IA	65.5	0.98	63.9	0.08	65.1	0.96	1.3	0.88	-0.4	-0.02	63.0	0.9	67.4	0.1	56.2	0.8	-11.1	0.7	-6.8	-0.12
	Peoria	IL	65.4	0.76	65.8	2.05	67.4	0.93	1.6	-1.12	2.1	0.17	62.8	0.7	70.4	0.0	59.2	0.8	-11.3	0.8	-3.6	0.08
	Raleigh	NC	71.4	1.05	70.6	1.38	73.9	0.82	3.2	-0.56	2.5	-0.23	68.9	1.0	67.3	1.5	70.6	1.0	3.3	-0.5	1.8	0.03
	Rochester	MN	58.9	0.72	64.0	0.10	64.2	0.00	0.2	-0.1	5.4	-0.72	56.4	0.7	66.9	1.1	53.9	0.7	-13.0	-0.3	-2.5	0.07
	St. Cloud	MN	57.1	0.67	60.2	0.08	64.4	0.00	4.2	-0.08	7.4	-0.67	54.6	0.6	63.5	0.5	52.9	0.7	-10.6	0.2	-1.7	0.04
St. Louis	MO	70.1	0.70	67.3	4.58	70.3	2.37	3.0	-2.21	0.1	1.67	67.6	0.7	71.6	0.0	63.7	0.5	-7.9	0.5	-4.0	-0.22	
Sioux City	IA	62.9	0.56	63.9	0.00	66.0	0.01	2.1	0.01	3.1	-0.55	60.4	0.6	69.0	1.0	58.1	0.2	-10.9	-0.8	-2.3	-0.39	
Springfield	IL	66.9	0.64	65.1	2.97	67.4	1.41	2.4	-1.56	0.5	0.77	64.6	0.6	68.9	0.0	59.9	0.7	-9.0	0.7	-4.6	0.04	
Topeka	KS	67.9	0.86	64.7	0.00	68.8	0.65	4.1	0.65	0.9	-0.21	65.6	0.8	71.9	0.5	61.6	0.6	-10.4	0.1	-4.0	-0.26	
CORN BELT SUMMARY			65.1	21.43	65.0	20.98	67.7	27.82	2.6	6.84	2.5	6.39	62.6	20.21	68.2	6.27	60.2	16.38	-8.0	10.11	-2.5	-3.83

Region	City	State	Weekending Sep 19, 2009										Weekending Sep 26, 2009									
			Normal	Normal	LAST YEAR	LAST YEAR	THIS YEAR	THIS YEAR	T Change	P Change	T Change	P Change	Normal	Normal	LAST YEAR	LAST YEAR	THIS YEAR	THIS YEAR	T Change	P Change	T Change	P Change
			Mean Temp	Precip	Mean Temp	Precip	Mean Temp	Precip	TY - LY	TY - LY	TY - N	TY - N	Mean Temp	Precip	Mean Temp	Precip	Mean Temp	Precip	TY - LY	TY - LY	TY - N	TY - N
Soybeans	Akron	OH	63.1	0.83	64.1	0.01	66.0	0.76	1.9	0.75	2.9	-0.07	60.5	0.76	64.6	0.00	58.8	0.78	-4.8	0.78	-0.7	0.02
	Alexandria	LA	76.5	0.77	73.6	0.42	76.9	2.37	3.4	1.95	0.4	1.60	64.6	0.14	71.1	0.16	67.7	0.00	-3.4	-0.16	3.2	-0.14
	Bismarck	ND	57.3	0.35	64.1	0.00	68.9	0.00	4.8	0.00	11.6	-0.35	74.8	0.82	72.4	0.00	74.2	0.56	1.8	0.56	-0.5	-0.26
	Bowling Green	KY	69.6	1.03	69.6	0.01	71.6	2.83	2.0	2.82	2.0	1.80	57.9	0.77	59.5	0.54	59.4	1.12	-0.1	0.58	1.5	0.35
	Columbia	MO	67.1	0.78	63.6	2.00	67.1	1.46	3.5	-0.54	0.0	0.68	66.8	0.21	71.5	0.08	71.7	0.00	0.2	-0.08	4.9	-0.21
	Columbus	OH	66.6	0.70	68.1	0.02	69.0	0.93	0.9	0.91	2.4	0.23	74.4	0.81	74.0	0.03	74.0	0.00	0.0	-0.03	-0.4	-0.81
	Dubuque	IA	61.7	0.83	62.4	0.13	64.8	0.85	2.4	0.72	3.1	0.02	60.9	1.00	61.4	0.73	61.6	1.45	0.3	0.72	0.7	0.45
	Evansville	IN	69.1	0.70	68.6	0.01	70.7	4.54	2.1	4.53	1.6	3.84	53.9	0.63	59.5	0.29	54.6	0.92	-4.9	0.63	0.8	0.29
	Flint	MI	60.6	0.91	60.1	2.63	65.5	0.41	5.4	-2.22	4.9	-0.50	60.6	0.70	59.2	0.20	58.1	0.54	-1.1	0.34	-2.5	-0.16
	Fort Wayne	IN	64.2	0.63	65.0	0.40	66.4	0.46	1.4	0.06	2.2	-0.17	66.9	0.39	69.3	0.00	68.3	0.07	-1.0	0.07	1.4	-0.32
	Grand Island	NE	64.2	0.57	64.9	0.00	66.7	0.00	1.8	0.00	2.5	-0.57	63.5	0.81	61.7	0.50	62.3	0.57	0.6	0.07	-1.2	-0.24
	Grand Rapids	MI	61.4	1.05	62.5	2.06	65.8	0.29	3.3	-1.77	4.4	-0.76	57.5	0.71	56.1	0.45	61.8	0.07	5.7	-0.38	4.3	-0.64
	Greensboro	NC	69.9	1.05	69.4	1.39	72.7	1.01	3.4	-0.38	2.9	-0.04	70.5	0.81	68.1	0.01	70.4	0.57	2.3	0.56	-0.1	-0.24
	Huron	SD	60.8	0.42	64.3	0.00	68.1	0.13	3.9	0.13	7.4	-0.29	71.1	0.96	70.0	0.00	69.4	0.44	-0.6	0.44	-1.7	-0.52
	Indianapolis	IN	66.4	0.66	67.2	0.22	69.1	1.40	1.9	1.18	2.8	0.74	63.9	0.68	63.8	1.14	65.9	1.37	2.1	0.23	2.0	0.69
	Jackson	TN	72.1	0.91	68.6	0.33	71.4	2.97	2.8	2.64	-0.8	2.06	71.7	0.77	69.0	0.08	71.8	0.82	2.8	0.74	0.1	0.05
	Lafayette	IN	66.5	0.63	66.1	0.98	68.2	0.94	2.1	-0.04	1.7	0.31	77.8	0.72	75.6	0.00	77.1	0.07	1.5	0.07	-0.7	-0.65
	Little Rock	AR	74.4	0.89	70.1	0.16	72.4	1.63	2.4	1.47	-1.9	0.74	74.9	0.07	77.0	0.00	83.1	0.00	6.1	0.00	8.2	-0.07
	Madison	WI	60.5	0.71	62.3	0.09	64.4	0.93	2.1	0.84	3.9	0.22	64.9	0.91	64.4	4.15	64.2	1.21	-0.1	-2.94	-0.7	0.30
	Milwaukee	WI	63.0	0.77	63.8	0.79	65.3	0.77	1.5	-0.02	2.3	0.00	56.2	0.82	52.9	1.47	56.6	0.88	3.7	-0.59	0.4	0.06
	Ottumwa	IA	65.5	0.98	63.9	0.08	65.1	0.96	1.3	0.88	-0.4	-0.02	75.8	1.05	75.1	0.00	74.9	0.00	-0.3	0.00	-0.9	-1.05
	Paducah	KY	69.1	0.85	67.1	0.13	69.9	3.11	2.9	2.98	0.8	2.26	74.4	1.06	71.1	0.11	75.5	0.86	4.4	0.75	1.1	-0.20
	Peoria	IL	65.4	0.76	65.8	2.05	67.4	0.93	1.6	-1.12	2.1	0.17	76.6	1.40	76.6	3.72	76.0	0.00	-0.6	-3.72	-0.6	-1.40
	Rochester	MN	58.9	0.72	64.0	0.10	64.2	0.00	0.2	-0.10	5.4	-0.72	60.9	0.74	61.5	0.31	58.3	0.97	-3.2	0.66	-2.6	0.23
	St. Cloud	MN	57.1	0.67	60.2	0.08	64.4	0.00	4.2	-0.08	7.4	-0.67	56.7	0.42	54.9	0.16	61.1	0.10	6.2	-0.06	4.4	-0.32
	Sioux City	IA	62.9	0.56	63.9	0.00	66.0	0.01	2.1	0.01	3.1	-0.55	56.4	0.35	59.0	0.00	64.9	0.00	5.9	0.00	8.5	-0.35
Springfield	IL	66.9	0.64	65.1	2.97	67.4	1.41	2.4	-1.56	0.5	0.77	56.4	0.84	59.0	0.72	55.9	0.94	-3.1	0.22	-0.5	0.10	
Springfield	MO	69.1	1.19	63.6	3.09	67.4	1.22	3.9	-1.87	-1.7	0.03	71.6	0.95	70.9	0.00	69.2	0.43	-1.7	0.43	-2.4	-0.52	
Topeka	KS	67.9	0.86	64.7	0.00	68.8	0.65	4.1	0.													