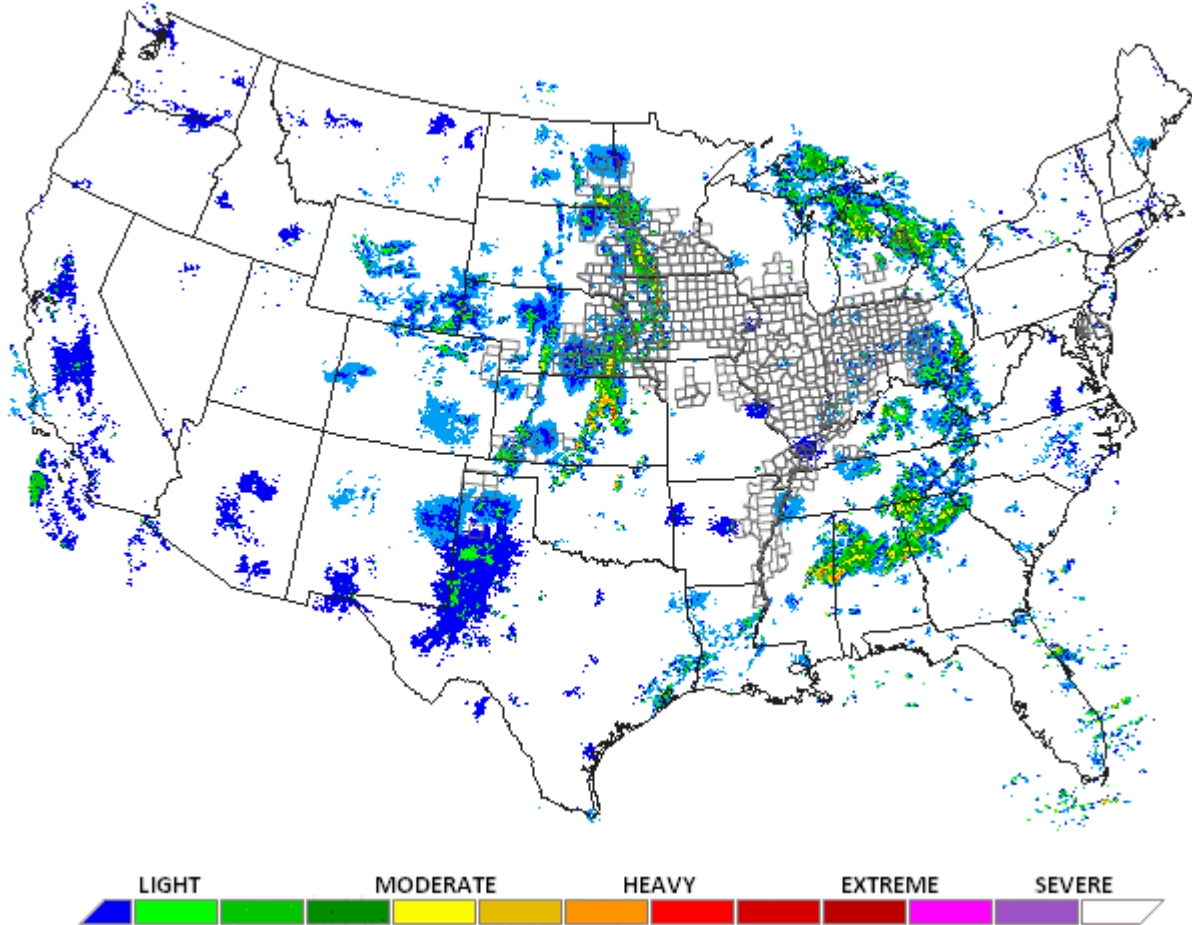


Issued: September 21, 2009 Vol. 3, No. 34

Current Radar (07:06 EDT 21 SEP 2009)



Warmer conditions are expected at the front end of the week which will allow for favorable harvest progress in the US. WTI yield expectations have not changed from last week: **156.0 – 158.5 bu/acre** for corn and **41.5 – 43.5 bu/acre**, for soybeans. Overnight markets are lower on the favorable expectations accompanying the warmer pattern. Some buying from China is anticipated to scale back, and there are no significant changes in supply expectations from last week, so the market will see a bearish tendency for corn and beans at the start of the week.

*The risk of loss in trading futures and options can be substantial, therefore only genuine "risk" funds should be used in such trading. Futures and options may not be a suitable investment for all individuals and individuals should carefully consider their financial condition in deciding whether to trade. Option traders should be aware that the exercise of a long option will result in a futures position. Information herein has been obtained and prepared from sources believed to be reliable; however no guarantee to its accuracy is made. Comments contained in these materials are not intended to be a solicitation to buy or sell any of the commodities mentioned. Past performance is not indicative of future performance results. Opinions expressed herein are the options of the author only and not the opinion of any firm the author may be affiliated or associated with.

US CORN AND SOY BELT

LAST WEEK (Sep 13, 2009 – Sep 19, 2009) Weather Summary

Region	City	State	Weekending	Normal	Normal	LAST YEAR	LAST YEAR	THIS YEAR	THIS YEAR	T Change	P Change	T Change	P Change
			Date (Saturday)	Mean Temp	Precip	Mean Temp	Precip	Mean Temp	Precip	TY - LY	TY - LY	TY-N	TY-N
Corn	Akron	OH	09/19/2009	63.1	0.83	64.1	0.01	63.5	0.00	-0.6	-0.01	0.4	-0.83
	Amarillo	TX	09/19/2009	69.0	0.42	64.6	0.00	65.0	0.16	0.4	0.16	-4.0	-0.26
	Bismarck	ND	09/19/2009	57.3	0.35	64.1	0.00	70.5	0.00	6.4	0.00	13.2	-0.35
	Bowling Green	KY	09/19/2009	69.6	1.03	69.6	0.01	73.2	1.29	3.6	1.28	3.6	0.26
	Columbia	MO	09/19/2009	67.1	0.78	63.6	2.00	67.9	0.01	4.2	-1.99	0.7	-0.77
	Columbus	OH	09/19/2009	66.6	0.70	68.1	0.02	66.8	0.07	-1.4	0.05	0.2	-0.63
	Dodge City	KS	09/19/2009	69.1	0.38	66.2	0.00	65.1	0.00	-1.1	0.00	-4.0	-0.38
	Dubuque	IA	09/19/2009	61.7	0.83	62.4	0.13	64.1	0.00	1.7	-0.13	2.4	-0.83
	Evansville	IN	09/19/2009	69.1	0.70	68.6	0.01	71.4	0.01	2.8	0.00	2.2	-0.69
	Flint	MI	09/19/2009	60.6	0.91	60.1	2.63	60.7	0.02	0.6	-2.61	0.1	-0.89
	Fort Wayne	IN	09/19/2009	64.2	0.63	65.0	0.40	63.7	0.00	-1.3	-0.40	-0.5	-0.63
	Grand Rapids	MI	09/19/2009	61.4	1.05	62.5	2.06	64.3	0.00	1.8	-2.06	2.9	-1.05
	Harrisburg	PA	09/19/2009	66.3	0.88	65.3	0.00	66.0	0.05	0.7	0.05	-0.3	-0.83
	Huron	SD	09/19/2009	60.8	0.42	64.3	0.00	67.3	0.00	3.0	0.00	6.5	-0.42
	Indianapolis	IN	09/19/2009	66.4	0.66	67.2	0.22	69.4	0.00	2.2	-0.22	3.1	-0.66
	Jackson	TN	09/19/2009	72.1	0.91	68.6	0.33	74.4	2.81	5.8	2.48	2.2	1.90
	Lafayette	IN	09/19/2009	66.5	0.63	66.1	0.98	68.3	0.00	2.1	-0.98	1.8	-0.63
	La Junta	CO	09/19/2009	67.1	0.20	64.9	0.06	66.1	0.00	1.1	-0.06	-1.0	-0.20
	Lincoln	NE	09/19/2009	65.9	0.70	63.9	0.00	66.9	0.00	3.1	0.00	1.1	-0.70
	Madison	WI	09/19/2009	60.5	0.71	62.3	0.09	64.0	0.00	1.7	-0.09	3.5	-0.71
	Milwaukee	WI	09/19/2009	63.0	0.77	63.8	0.79	66.8	0.00	3.0	-0.79	3.8	-0.77
	Ottumwa	IA	09/19/2009	65.5	0.98	63.9	0.08	65.4	0.00	1.5	-0.08	-0.1	-0.98
	Peoria	IL	09/19/2009	65.4	0.76	65.8	2.05	67.4	0.00	1.6	-2.05	2.0	-0.76
	Raleigh	NC	09/19/2009	71.4	1.05	70.6	1.38	71.8	0.42	1.1	-0.96	0.4	-0.63
	Rochester	MN	09/19/2009	58.9	0.72	64.0	0.10	66.9	0.00	2.9	-0.10	8.1	-0.72
	St. Cloud	MN	09/19/2009	57.1	0.67	60.2	0.08	67.6	0.00	7.4	-0.08	10.5	-0.67
St. Louis	MO	09/19/2009	70.1	0.70	67.3	4.58	71.2	0.00	3.9	-4.58	1.1	-0.70	
Sioux City	IA	09/19/2009	62.9	0.56	63.9	0.00	67.6	0.00	3.7	0.00	4.6	-0.56	
Springfield	IL	09/19/2009	66.9	0.64	65.1	2.97	66.9	0.00	1.8	-2.97	-0.1	-0.64	
Topeka	KS	09/19/2009	67.9	0.86	64.7	0.00	68.1	0.00	3.4	0.00	0.1	-0.86	
CORN BELT SUMMARY				65.1	21.43	65.0	20.98	67.3	4.84	2.2	-16.14	2.1	-16.59

Region	City	State	Weekending	Normal	Normal	LAST YEAR	LAST YEAR	THIS YEAR	THIS YEAR	T Change	P Change	T Change	P Change
			Date (Saturday)	Mean Temp	Precip	Mean Temp	Precip	Mean Temp	Precip	TY - LY	TY - LY	TY-N	TY-N
Soybeans	Akron	OH	09/19/2009	63.1	0.83	64.1	0.01	63.5	0.00	-0.6	-0.01	0.4	-0.83
	Alexandria	LA	09/19/2009	76.5	0.77	73.6	0.42	81.7	0.83	8.1	0.41	5.2	0.06
	Bismarck	ND	09/19/2009	57.3	0.35	64.1	0.00	70.5	0.00	6.4	0.00	13.2	-0.35
	Bowling Green	KY	09/19/2009	69.6	1.03	69.6	0.01	73.2	1.29	3.6	1.28	3.6	0.26
	Columbia	MO	09/19/2009	67.1	0.78	63.6	2.00	67.9	0.01	4.2	-1.99	0.7	-0.77
	Columbus	OH	09/19/2009	66.6	0.70	68.1	0.02	66.8	0.07	-1.4	0.05	0.2	-0.63
	Dubuque	IA	09/19/2009	61.7	0.83	62.4	0.13	64.1	0.00	1.7	-0.13	2.4	-0.83
	Evansville	IN	09/19/2009	69.1	0.70	68.6	0.01	71.4	0.01	2.8	0.00	2.2	-0.69
	Flint	MI	09/19/2009	60.6	0.91	60.1	2.63	60.7	0.02	0.6	-2.61	0.1	-0.89
	Fort Wayne	IN	09/19/2009	64.2	0.63	65.0	0.40	63.7	0.00	-1.3	-0.40	-0.5	-0.63
	Grand Island	NE	09/19/2009	64.2	0.57	64.9	0.00	65.4	0.00	0.5	0.00	1.2	-0.57
	Grand Rapids	MI	09/19/2009	61.4	1.05	62.5	2.06	64.3	0.00	1.8	-2.06	2.9	-1.05
	Greensboro	NC	09/19/2009	69.9	1.05	69.4	1.39	71.0	1.12	1.6	-0.27	1.1	0.07
	Huron	SD	09/19/2009	60.8	0.42	64.3	0.00	67.3	0.00	3.0	0.00	6.5	-0.42
	Indianapolis	IN	09/19/2009	66.4	0.66	67.2	0.22	69.4	0.00	2.2	-0.22	3.1	-0.66
	Jackson	TN	09/19/2009	72.1	0.91	68.6	0.33	74.4	2.81	5.8	2.48	2.2	1.90
	Lafayette	IN	09/19/2009	66.5	0.63	66.1	0.98	68.3	0.00	2.1	-0.98	1.8	-0.63
	Little Rock	AR	09/19/2009	74.4	0.89	70.1	0.16	73.6	5.05	3.5	4.89	-0.8	4.16
	Madison	WI	09/19/2009	60.5	0.71	62.3	0.09	64.0	0.00	1.7	-0.09	3.5	-0.71
	Milwaukee	WI	09/19/2009	63.0	0.77	63.8	0.79	66.8	0.00	3.0	-0.79	3.8	-0.77
	Ottumwa	IA	09/19/2009	65.5	0.98	63.9	0.08	65.4	0.00	1.5	-0.08	-0.1	-0.98
	Paducah	KY	09/19/2009	69.1	0.85	67.1	0.13	72.6	0.53	5.6	0.40	3.5	-0.32
	Peoria	IL	09/19/2009	65.4	0.76	65.8	2.05	67.4	0.00	1.6	-2.05	2.0	-0.76
	Rochester	MN	09/19/2009	58.9	0.72	64.0	0.10	66.9	0.00	2.9	-0.10	8.1	-0.72
	St. Cloud	MN	09/19/2009	57.1	0.67	60.2	0.08	67.6	0.00	7.4	-0.08	10.5	-0.67
	Sioux City	IA	09/19/2009	62.9	0.56	63.9	0.00	67.6	0.00	3.7	0.00	4.6	-0.56
Springfield	IL	09/19/2009	66.9	0.64	65.1	2.97	66.9	0.00	1.8	-2.97	-0.1	-0.64	
Springfield	MO	09/19/2009	69.1	1.19	63.6	3.09	68.9	0.59	5.3	-2.50	-0.3	-0.60	
Topeka	KS	09/19/2009	67.9	0.86	64.7	0.00	68.1	0.00	3.4	0.00	0.1	-0.86	
Tupelo	MS	09/19/2009	73.4	0.83	69.6	1.18	76.7	5.69	7.1	4.51	3.3	4.86	
SOYBEAN BELT SUMMARY				65.7	23.25	65.5	21.33	68.5	18.02	3.0	-3.31	2.8	-5.23

Much Colder < -7°	Colder -2° to -6°	Similar -1° to +1°	Warmer +2° to +6°	Much Warmer > +7°
Much Wetter >200%	Wetter 125% to 200%	Similar 75% to 125 %	Drier 50% to 75%	Much Drier < 50%



US CORN AND SOY BELT

TWO WEEK FORECAST (Sep 20 – Oct 3, 2009)

Region	City	State	Weekending Sep 19, 2009										Weekending Sep 26, 2009									
			Normal	Normal	AST YEAR	AST YEAR	THIS YEAR	THIS YEAR	T Change	P Change	T Change	P Change	Normal	Normal	AST YEAR	AST YEAR	THIS YEAR	THIS YEAR	T Change	P Change	T Change	P Change
			Mean Temp	Precip	Mean Temp	Precip	Mean Temp	Precip	TY - LY	TY - LY	TY - N	TY - N	Mean Temp	Precip	Mean Temp	Precip	Mean Temp	Precip	TY - LY	TY - LY	TY - N	TY - N
			Mean Temp	Precip	Mean Temp	Precip	Mean Temp	Precip	TY - LY	TY - LY	TY - N	TY - N	Mean Temp	Precip	Mean Temp	Precip	Mean Temp	Precip	TY - LY	TY - LY	TY - N	TY - N
Corn	Akron	OH	60.5	0.76	64.6	0.00	67.9	0.24	3.3	0.24	7.4	-0.52	57.7	0.7	55.1	0.6	61.4	0.6	6.3	0.0	3.7	-0.03
	Amarillo	TX	66.9	0.39	69.3	0.00	64.1	1.55	-5.2	1.55	-2.8	1.16	64.5	0.4	67.1	0.4	64.8	0.1	-2.2	-0.3	0.3	-0.23
	Bismarck	ND	54.6	0.35	61.2	0.60	62.2	0.09	1.0	-0.51	7.6	-0.26	52.1	0.4	54.8	0.0	50.0	0.2	-4.8	0.2	-2.1	-0.16
	Bowling Green	KY	67.2	0.96	71.0	0.00	75.4	2.14	4.4	2.14	8.1	1.18	64.3	0.9	63.1	0.2	65.1	0.7	1.9	0.5	0.8	-0.14
	Columbia	MO	64.8	0.77	69.9	0.17	69.7	2.76	-0.1	2.59	4.9	1.99	62.2	0.7	59.6	0.3	61.5	0.5	1.9	0.2	-0.7	-0.26
	Columbus	OH	64.1	0.63	68.8	0.00	71.6	0.87	2.9	0.87	7.5	0.24	61.1	0.6	60.9	0.7	63.6	0.4	2.7	-0.3	2.5	-0.14
	Dodge City	KS	66.7	0.35	74.1	0.00	64.1	1.12	-9.9	1.12	-2.6	0.77	64.0	0.4	67.1	0.0	61.7	0.1	-5.4	0.1	-2.3	-0.24
	Dubuque	IA	59.4	0.74	66.9	0.08	66.2	2.07	-0.6	1.99	6.9	1.33	56.9	0.7	52.2	0.2	55.4	0.9	3.2	0.8	-1.5	0.27
	Evansville	IN	66.6	0.70	71.1	0.01	74.6	2.94	3.5	2.93	7.9	2.24	63.9	0.6	61.7	0.4	64.5	0.6	2.8	0.2	0.6	-0.03
	Flint	MI	58.1	0.85	62.3	0.00	66.9	0.71	4.6	0.71	8.7	-0.14	55.4	0.7	50.9	1.1	58.7	0.7	7.8	-0.5	3.3	-0.06
	Fort Wayne	IN	61.7	0.63	67.1	0.00	69.7	1.34	2.6	1.34	8.0	0.71	58.9	0.6	55.9	0.0	61.2	0.4	5.3	0.3	2.3	-0.21
	Grand Rapids	MI	58.8	0.96	66.4	0.00	67.5	0.57	1.1	0.57	8.7	-0.39	56.2	0.8	52.6	0.5	59.1	0.7	6.5	0.2	2.9	-0.12
	Harrisburg	PA	63.6	0.84	63.1	0.01	66.9	0.00	3.8	-0.01	3.3	-0.84	60.7	0.8	59.4	0.4	61.9	1.6	2.5	1.2	1.2	0.78
	Huron	SD	58.0	0.42	66.3	0.32	61.4	0.85	-4.9	0.53	3.4	0.43	55.3	0.4	56.7	0.3	53.0	0.2	-3.7	-0.1	-2.3	-0.18
	Indianapolis	IN	63.9	0.63	71.0	0.00	73.4	2.84	2.4	2.84	9.5	2.21	61.1	0.6	60.0	0.2	63.2	0.7	3.2	0.5	2.2	0.10
	Jackson	TN	69.9	0.91	70.5	0.09	74.9	3.09	4.4	3	5.1	2.18	67.2	0.8	64.4	0.0	65.2	0.8	0.8	0.8	-2.1	-0.01
	Lafayette	IN	64.1	0.57	69.5	0.00	72.1	2.66	2.6	2.66	8.0	2.09	61.2	0.6	57.8	0.0	62.7	0.8	4.9	0.8	1.5	0.21
	La Junta	CO	64.6	0.14	71.1	0.16	59.4	1.01	-11.7	0.85	-5.2	0.87	61.9	0.2	65.6	0.0	64.1	0.3	-1.5	0.3	2.2	0.14
	Lincoln	NE	63.2	0.63	70.8	0.12	63.8	0.58	-7.0	0.46	0.6	-0.05	60.6	0.6	60.6	0.1	58.7	0.2	-1.9	0.0	-1.9	-0.39
	Madison	WI	58.1	0.64	66.9	0.09	66.1	2.58	-0.8	2.49	7.9	1.94	55.7	0.6	50.7	0.1	55.8	1.1	5.1	1.0	0.1	0.52
	Milwaukee	WI	60.6	0.71	67.1	0.00	66.6	1.91	-0.4	1.91	6.1	1.20	57.9	0.6	53.6	0.1	60.0	1.0	6.4	0.9	2.0	0.40
	Ottumwa	IA	63.0	0.93	67.4	0.13	66.7	2.03	-0.6	1.99	3.7	1.10	60.4	0.8	56.1	0.6	57.1	0.5	0.9	-0.1	-3.4	-0.32
	Peoria	IL	62.8	0.70	70.4	0.00	70.4	3.74	-0.1	3.74	7.6	3.04	60.1	0.7	58.6	0.6	61.8	0.5	3.3	-0.1	1.7	-0.18
	Raleigh	NC	68.9	0.98	67.3	1.47	73.0	0.78	5.7	-0.69	4.2	-0.20	66.1	0.9	66.4	0.3	69.7	0.8	3.3	0.5	3.5	-0.11
	Rochester	MN	56.4	0.66	66.9	1.07	65.2	0.79	-1.6	-0.28	8.9	0.13	53.9	0.6	52.9	0.3	54.1	0.5	1.2	0.2	0.3	-0.13
St. Cloud	MN	54.6	0.63	63.5	0.45	63.9	1.28	0.4	0.83	9.2	0.65	52.2	0.6	48.9	0.4	53.1	0.4	4.2	0.0	0.9	-0.20	
St. Louis	MO	67.6	0.70	71.6	0.00	73.6	2.62	2.1	2.62	6.0	1.92	64.9	0.6	62.5	0.3	65.5	0.7	3.0	0.4	0.5	0.04	
Sioux City	IA	60.4	0.56	69.0	0.99	62.8	0.61	-6.2	-0.38	2.4	0.05	57.9	0.5	57.1	0.6	56.8	0.4	-0.2	-0.2	-1.0	-0.10	
Springfield	IL	64.6	0.63	68.9	0.00	69.8	2.36	0.9	2.36	5.3	1.73	62.0	0.6	58.9	0.5	63.5	0.7	4.6	0.2	1.5	0.09	
Topeka	KS	65.6	0.84	71.9	0.51	66.4	2.17	-5.6	1.66	0.8	1.33	63.1	0.8	62.6	0.1	59.7	0.5	-3.0	0.5	-3.5	-0.25	
CORN BELT SUMMARY			62.6	20.21	68.2	6.27	67.9	48.30	-0.3	42.03	5.2	28.09	60.0	18.40	58.5	9.16	60.4	17.46	2.0	8.30	0.4	-0.94

Region	City	State	Weekending Sep 19, 2009										Weekending Sep 26, 2009									
			Normal	Normal	AST YEAR	AST YEAR	THIS YEAR	THIS YEAR	T Change	P Change	T Change	P Change	Normal	Normal	AST YEAR	AST YEAR	THIS YEAR	THIS YEAR	T Change	P Change	T Change	P Change
			Mean Temp	Precip	Mean Temp	Precip	Mean Temp	Precip	TY - LY	TY - LY	TY - N	TY - N	Mean Temp	Precip	Mean Temp	Precip	Mean Temp	Precip	TY - LY	TY - LY	TY - N	TY - N
			Mean Temp	Precip	Mean Temp	Precip	Mean Temp	Precip	TY - LY	TY - LY	TY - N	TY - N	Mean Temp	Precip	Mean Temp	Precip	Mean Temp	Precip	TY - LY	TY - LY	TY - N	TY - N
Soybeans	Akron	OH	60.5	0.76	64.6	0.00	67.9	0.24	3.3	0.24	7.4	-0.52	57.7	0.67	55.1	0.61	61.4	0.64	6.3	0.03	3.7	-0.03
	Alexandria	LA	74.4	0.81	74.0	0.03	79.4	2.94	5.3	2.91	4.9	2.13	61.9	0.15	65.6	0.00	64.1	0.29	-1.5	0.29	2.2	0.14
	Bismarck	ND	54.6	0.35	61.2	0.60	62.2	0.09	1.0	-0.51	7.6	-0.26	72.2	0.68	72.3	0.00	74.0	1.30	1.7	1.30	1.8	0.62
	Bowling Green	KY	67.2	0.96	71.0	0.00	75.4	2.14	4.4	2.14	8.1	1.18	55.2	0.72	57.6	1.33	57.6	0.77	0.0	-0.56	2.4	0.05
	Columbia	MO	64.8	0.77	69.9	0.17	69.7	2.76	-0.1	2.59	4.9	1.99	64.1	0.21	67.6	0.47	67.0	0.42	-0.6	-0.05	2.9	0.21
	Columbus	OH	64.1	0.63	68.8	0.00	71.6	0.87	2.9	0.87	7.5	0.24	72.0	0.89	69.6	0.02	73.4	0.67	3.7	0.65	1.4	-0.22
	Dubuque	IA	59.4	0.74	66.9	0.08	66.2	2.07	-0.6	1.99	6.9	1.33	58.1	0.88	56.7	3.97	60.9	1.58	4.2	-2.39	2.9	0.70
	Evansville	IN	66.6	0.70	71.1	0.01	74.6	2.94	3.5	2.93	7.9	2.24	51.4	0.56	49.3	0.32	55.1	0.78	5.8	0.46	3.7	0.22
	Flint	MI	58.1	0.85	62.3	0.00	66.9	0.71	4.6	0.71	8.7	-0.14	57.9	0.67	54.9	0.69	58.9	0.85	3.9	0.16	1.0	0.18
	Fort Wayne	IN	61.7	0.63	67.1	0.00	69.7	1.34	2.6	1.34	8.0	0.71	64.5	0.37	67.1	0.44	64.8	0.14	-2.2	-0.30	0.3	-0.23
	Grand Island	NE	61.7	0.51	69.7	0.00	61.7	0.16	-8.0	0.16	0.0	-0.35	60.9	0.75	59.1	0.00	61.8	0.60	2.8	0.60	1.0	-0.15
	Grand Rapids	MI	58.8	0.96	66.4	0.00	67.5	0.57	1.1	0.57	8.7	-0.39	55.9	0.81	60.5	2.09	56.1	0.00	-4.4	-2.09	0.1	-0.81
	Greensboro	NC	67.4	1.00	64.6	1.44	72.2	0.08	7.6	-1.36	4.8	-0.92	67.8	0.77	67.7	0.99	69.6	0.92	1.9	-0.07	1.8	0.15
	Huron	SD	58.0	0.42	66.3	0.32	61.4	0.85	-4.9	0.53	3.4	0.43	68.6	0.84	70.1	0.00	66.6	0.97	-1.5	0.97	0.0	0.13
	Indianapolis	IN	63.9	0.63	71.0	0.00	73.4	2.84	2.4	2.84	9.5	2.21	61.1	0.63	63.6	0.67	65.5	1.14	1.9	0.47	4.3	0.51
	Jackson	TN	69.9	0.91	70.5	0.09	74.9	3.09	4.4	3.09	5.1	2.18	69.0	0.77	69.3	0.05	71.0	1.50	1.7	1.45	2.0	0.73
	Lafayette	IN	64.1	0.57	69.5	0.00	72.1	2.66	2.6	2.66	8.0	2.09	75.8	0.80	72.8	0.00	75.5	0.31	2.8	0.31	-0.3	-0.49
	Little Rock	AR	72.1	0.91	74.1	0.00	76.3	2.33	2.3	2.33	4.3	1.42	72.9	0.06	77.6	0.00	75.6	0.00	-2.0	0.00	2.7	-0.06
	Madison	WI	58.1	0.64	66.9	0.09	66.1	2.58	-0.8	2.49	7.9	1.94	61.9	0.83	62.4	0.78	64.4	0.98	2.0	0.20	2.5	0.15
	Milwaukee	WI	60.6	0.71	67.1	0.00	66.6	1.91	-0.4	1.91	6.1	1.20	53.4	0.77	54.4	2.58	54.3	1.40	-0.2	-1.18	0.8	0.63
	Ottumwa	IA	63.0	0.93	67.4	0.13	66.7	2.03	-0.6	1.99	3.7	1.10	73.6	0.94	73.6	0.00	74.5	0.20	0.8	0.20	0.9	-0.74
	Paducah	KY	66.9	0.84	70.5	0.00	74.9	3.36	4.4	3.36	8.0	2.52	72.3	0.91	71.5	0.02	74.9	2.11	3.4	2.09	2.7	1.20
	Peoria	IL	62.8	0.70	70.4	0.00	70.4	3.74	-0.1	3.74	7.6	3.04	74.5	1.32	73.1	0.00	75.3	0.58	2.2	0.58	0.8	-0.74
	Rochester	MN	56.4	0.66	66.9	1.07	65.2	0.79	-1.6	-0.28	8.9	0.13	58.3	0.69	54.1	0.15	59.5	0.61	5.4	0.46	1.2	-0.08
	St. Cloud	MN	54.6	0.63	63.5	0.45	63.9	1.28	0.4	0.83	9.2	0.65	54.7	0.48	57.4	0.48	53.3	0.00	-4.1	-0.48	-1.4	-0.48
Sioux City	IA	60.4	0.56	69.0	0.99	62.8	0.61	-6.2	-0.38	2.4	0.05	54.2	0.35	60.8	0.15	58.2	0.11	-2.6	-0.04	4.0	-0.24	
Springfield	IL	64.6	0.63	68.9	0.00	69.8	2.36	0.9	2.36	5.3	1.73	53.9	0.76	52.6	0.49	56.4	0.52	3.				